

KTest

更に上のクオリティ 更に上のサービス



問題集

<http://www.ktest.jp>

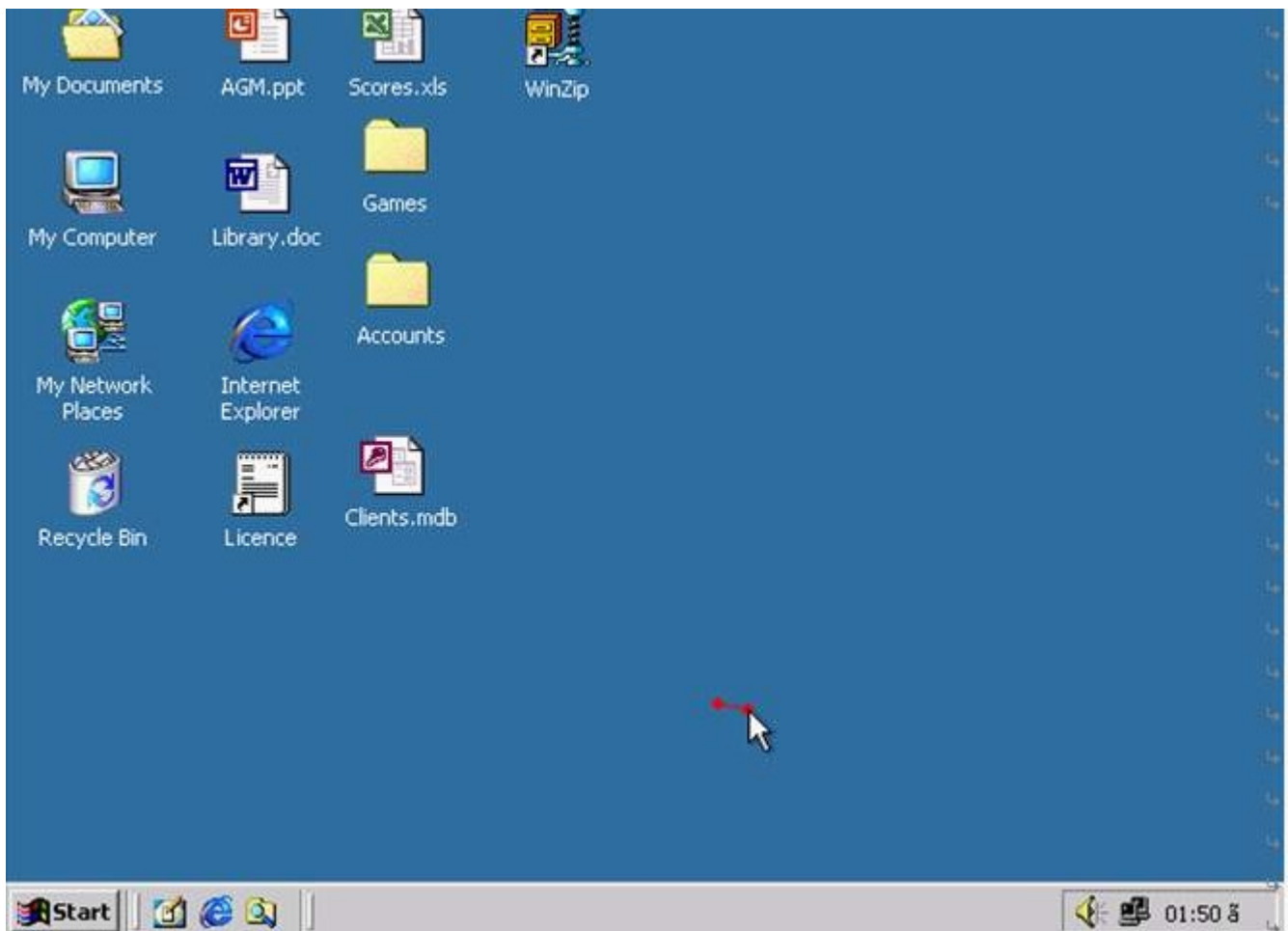
1年で無料進級することに提供する

Exam : **ICDL-Widows**

Title : The ICDL L4 widows

Version : Demo

1. On the simulated Windows desktop carry out the necessary steps to restart the computer. Note: Do not use Ctrl + Alt + Delete for this question.



A. Select->start->shutdown->restart->ok

Answer:A

2. If the computer application you are working on has "frozen" what is the first thing you should do?

A. Re-install the non-responding application.

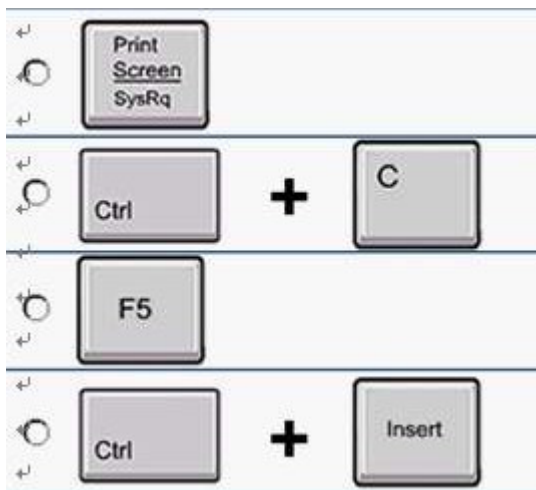
B. Press ctrl+Alt+Delete.

C. Turn off the PC's power supply.

D. Select Exit from the application's File menu.

Answer:B

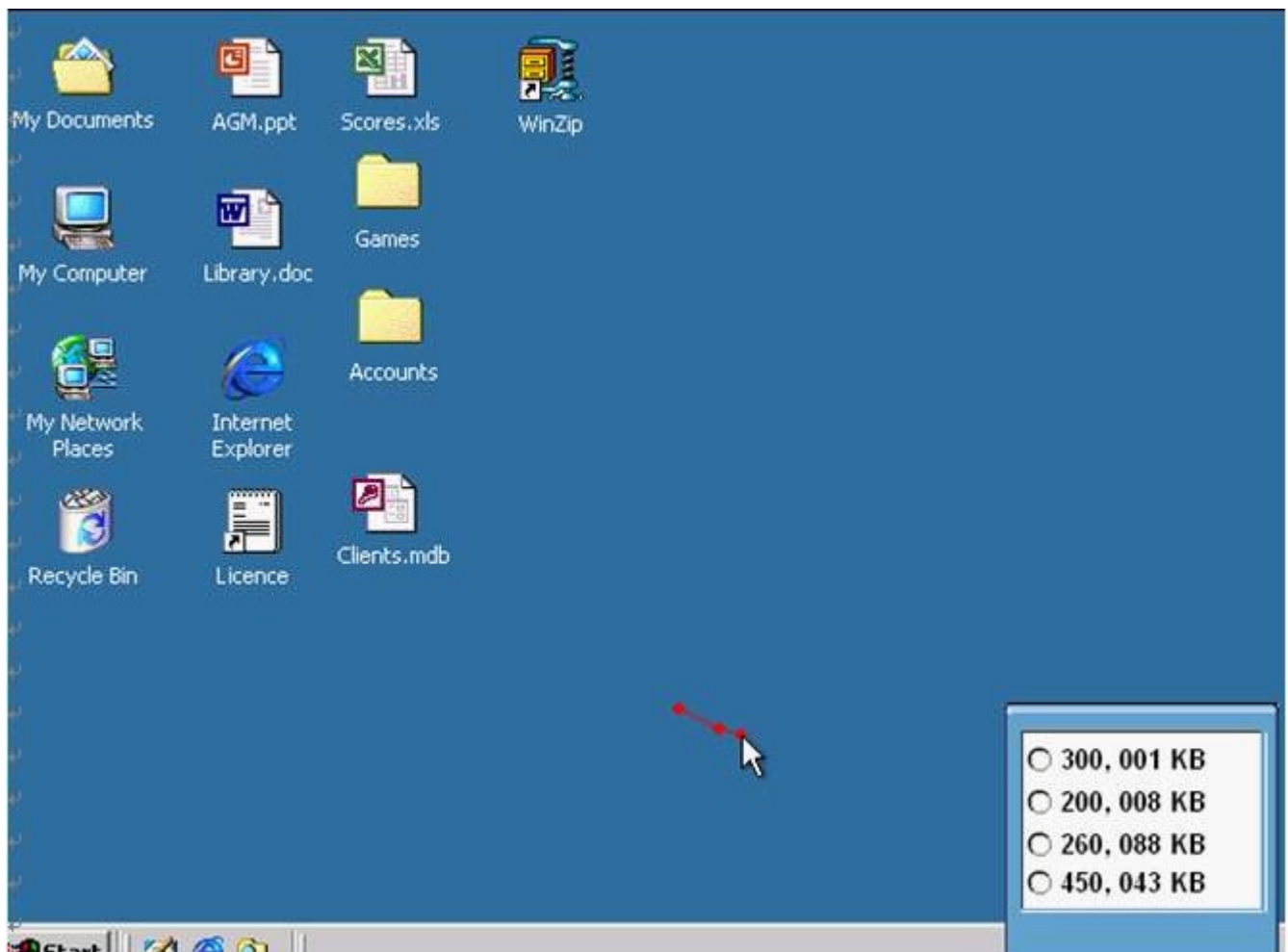
3. Pressing which of the following keys would place a picture of what is currently displayed on your monitor onto the clipboard?



A.A

Answer:A

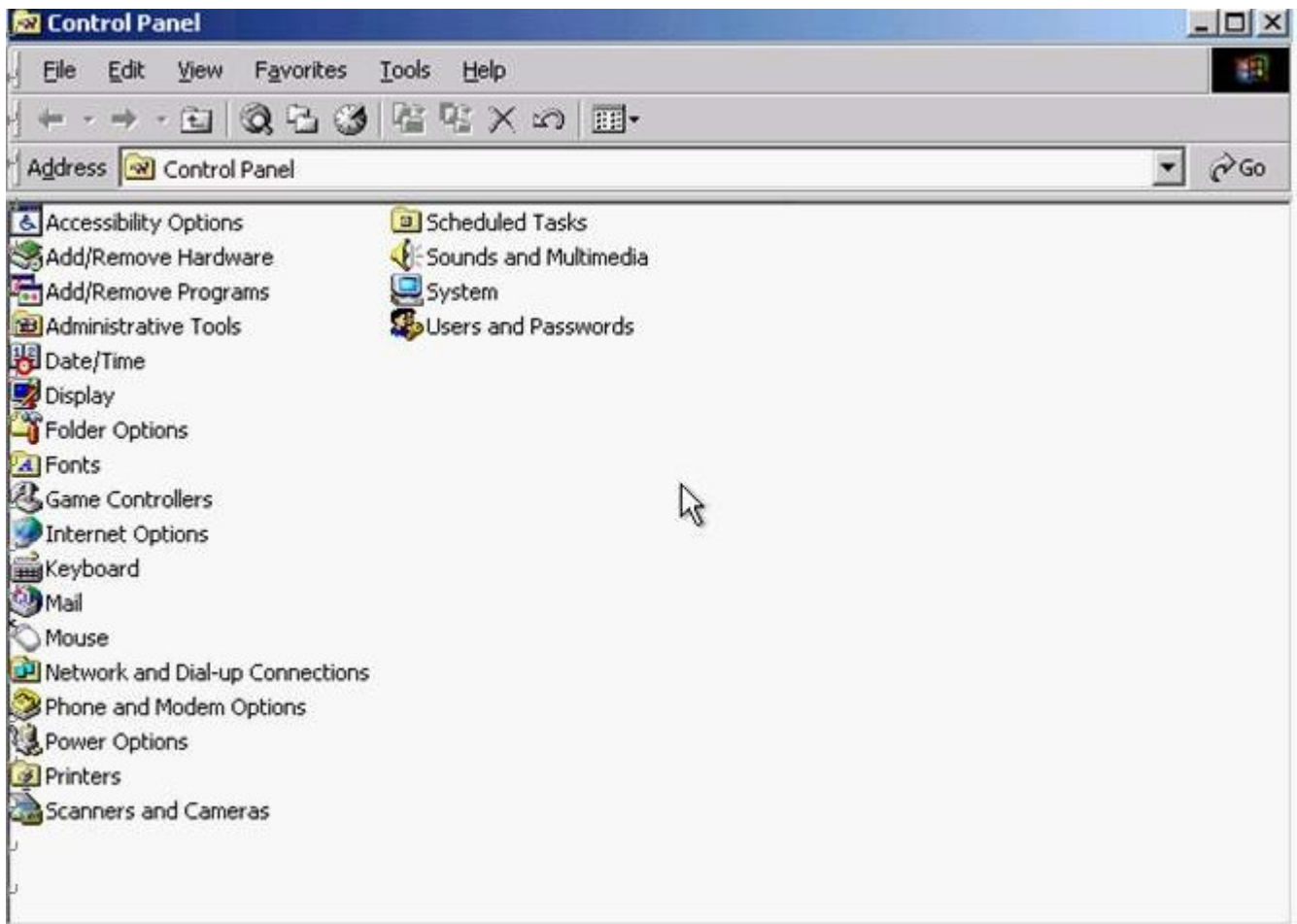
4. Use the simulated Windows Desktop to find out how much RAM is installed. Select the appropriate radio button then click on SUBMIT.



A.R.click on my computer->properties->General->select the RAM Speed->ok

Answer:A

5. Change the keyboard language to UK English.



A.Select->keyboard->input Locales->select to English UK->press Set as Defaults->ok

Answer:A