

# ***KTest***

更に上のクオリティ 更に上のサービス



## 問題集

<http://www.ktest.jp>

1年で無料進級することに提供する

**Exam** : **HP0-D14**

**Title** : Architecting HP  
CloudSystem Solutions

**Version** : Demo

1.DRAG DROP

Click the Task button. Match the HP server with the correct hypervisor for use in an HP CloudSystem Matrix solution.

---

**Match the HP server with the correct hypervisor for use in an HP CloudSystem Matrix solution.**

**Hypervisors**

VMware vSphere	(place server here)
HP Virtual Machines	(place server here)
Microsoft Hyper-V	(place server here)

**HP Servers**

HP ProLiant server	
HP Integrity and HP ProLiant server	
HP Integrity server	

Done

Answer:

**Match the HP server with the correct hypervisor for use in an HP CloudSystem Matrix solution.**

### Hypervisors

VMware vSphere	HP ProLiant server
HP Virtual Machines	HP Integrity and HP ProLiant server
Microsoft Hyper-V	HP Integrity server

### HP Servers

HP ProLiant server	
HP Integrity and HP ProLiant server	
HP Integrity server	

Done

2. When HP ProLiant servers are used, which infrastructure provisioning technology is utilized in an HP CloudSystem Matrix solution.?

- A. Insight Control server deployment
- B. Ignite-UX
- C. Microsoft System Center
- D. HP SmartStart

**Answer: A**

3. Which feature is available in all three HP CloudSystem offerings?

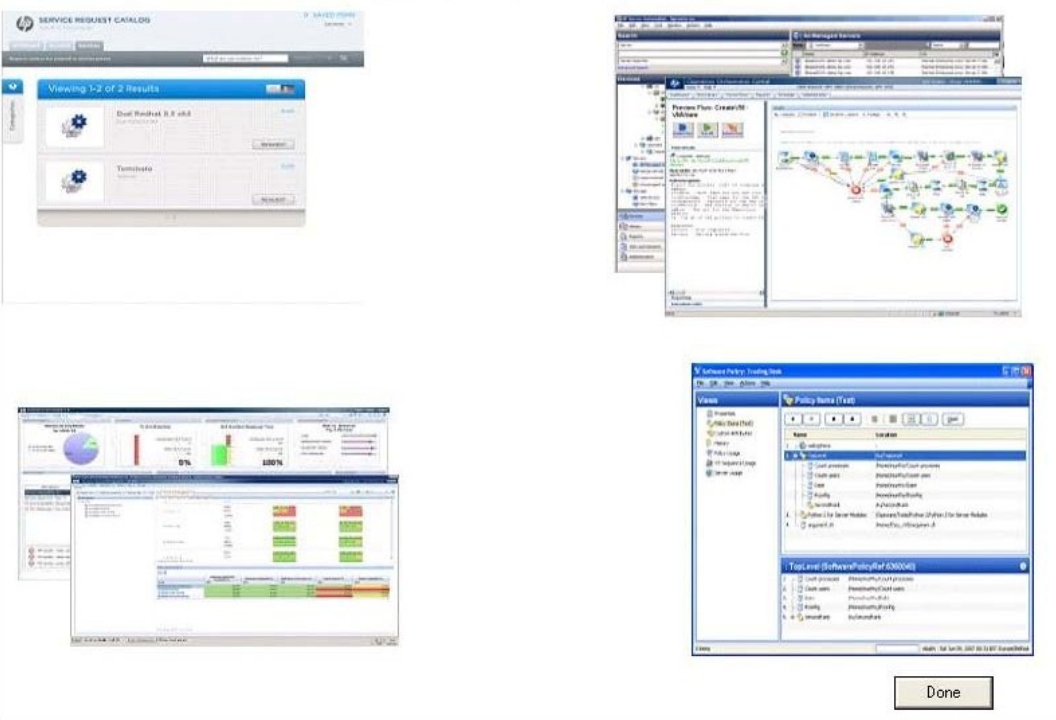
- A. HP Operations Orchestration
- B. HP Advanced Resource Manager
- C. HP Aggregation Platform for SaaS
- D. HP Database and Middleware Automation

**Answer: A**

4. HOTSPOT

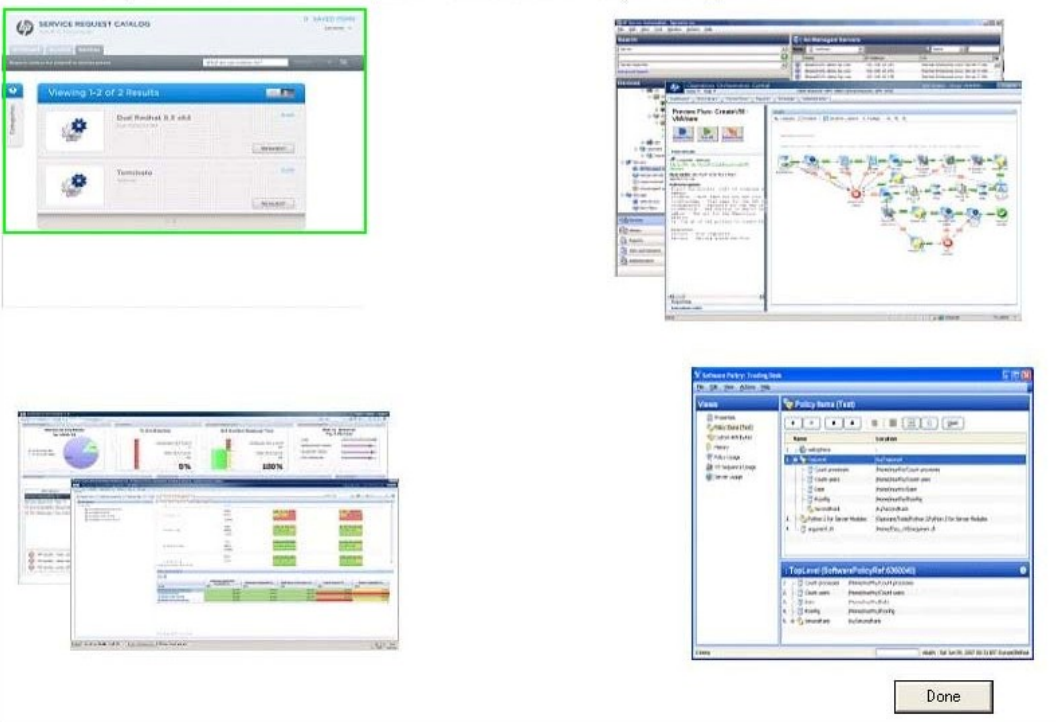
Click the Task button. Click on the portal a customer uses to perform basic service lifecycle management.

Click on the portal a customer uses to perform basic service lifecycle management.



Answer:

Click on the portal a customer uses to perform basic service lifecycle management.



### 5.HOTSPOT

Click the Task button. Click on the portal a customer uses to monitor services, events and processes.

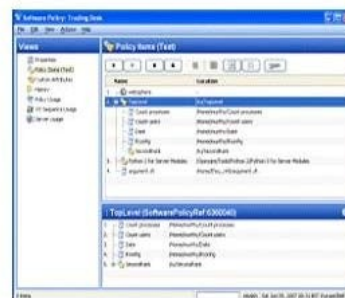
Click on the portal a customer uses to monitor services, events and processes.



Done

Answer:

Click on the portal a customer uses to monitor services, events and processes.



Done

6. In HP Cloud Service Automation (CSA), which role uses the Provider Management tab in the HP CSA Provider Console to populate the HP CSA Database?

- A. Service Subscriber
- B. Administrator

C. Resource Manager

D. Service Publisher

**Answer: C**

7.Which HP CloudSystem term is used to describe an HP reference configuration?

A. orchestration

B. service templates C. cloud maps

D. application lifecycle management

**Answer: C**

8.In HP Cloud Service Automation (CSA), which management interface is used by a Service Publisher?

A. HP Operations Orchestration Studio

B. HP CSA Environment Portal

C. HP CSA Provider Console

D. HP Service Request Catalog

**Answer: C**

9.In HP Cloud Service Automation (CSA), what is the role for a skilled architect who uses HP Operations Orchestration Studio to graphically create the components of a service offering to produce a Service Definition Document?

A. Service Subscriber

B. Service Designer

C. Administrator

D. Service Publisher

**Answer: B**

10.In an HP CloudSystem Enterprise, which portal is used for service presentation?

A. HP Operations Orchestration Studio Designer

B. HP CSA Admin Portal

C. HP CSA Foundation Server with Self Service Portal

D. HP Site Scope Service Portal

**Answer: D**