

# ***KTest***

更に上のクオリティ 更に上のサービス



## 問題集

<http://www.ktest.jp>

1年で無料進級することに提供する

**Exam** : **9L0-418**

**Title** : **Mac Management Basics  
10.9**

**Version** : **DEMO**

1. You've set up a software update server.

Which is a valid method of configuring client computers to retrieve updates from your server?

- A. In the Sharing pane of System Preferences on the client computers, click Update Server, then select your server from the Update Servers list
- B. Install a configuration profile with a Software Update payload specifying the URL of your software update server
- C. Install an XML file in /Library/SoftwareUpdates/ on the client computers containing the IP address of your server
- D. In the App Store app on the client computers, choose App Store > Preferences, click Updates, and select your server from the Update Servers list

**Answer: B**

**Explanation:**

Reference: <http://krypted.com/mac-security/using-the-software-update-service-on-mountain-lionserver/>

2. When creating a network disk image that will be stored at the root of a volume, which action should you add to the workflow so that the network disk image can be used to start up a computer?

- A. Define Image Source
- B. Define NetRestore Source
- C. Bless NetBoot Image Folder
- D. Enable Automated Installation
- E. Create Image

**Answer: A**

**Explanation:**

Reference: <http://support.apple.com/kb/PH9428>

3. In OS X Server, which feature does the Software Update service provide, but the Caching service does NOT?

- A. The caching of software updates from Apple
- B. The caching of software purchased from the Mac App Store
- C. The ability to select which Apple software updates are available to managed client computers
- D. The ability to deliver custom-built installation packages to client computers
- E. The caching of books purchased through iTunes

**Answer: C**

4. You used Terminal to configure an OS X computer to retrieve updates from PretendCo's internal software update server, but the server is no longer active.

How would you point the client computer back to the Apple Software Update server to retrieve software updates?

- A. In Terminal, type `sudo defaults delete /Library/Preferences/com.apple.SoftwareUpdate CatalogURL` and press Return
- B. In App Store preferences, click Reset Software Updates
- C. In Terminal, type `sudo defaults write /Library/Preferences/com.apple.SoftwareUpdate CatalogURL "http://updates.apple.com:8088/index.sucatalog"` and press Return
- D. In the General pane of System Preferences, click Reset Software Updates

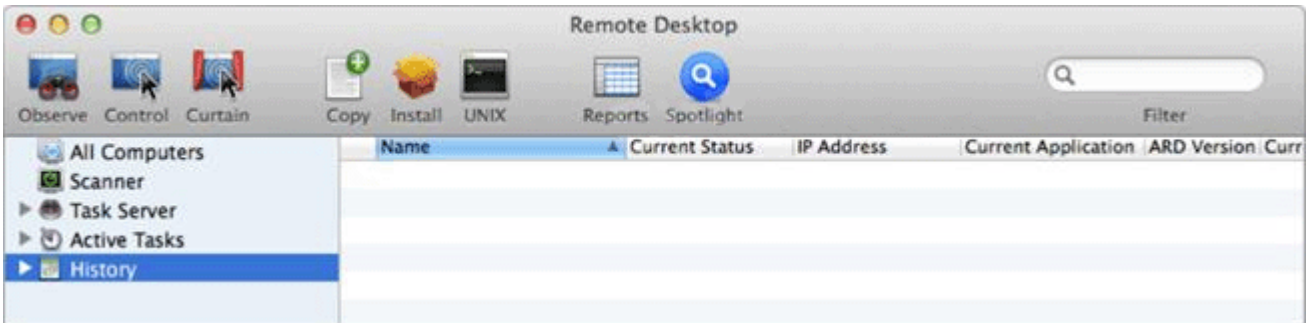
**Answer: C**

**Explanation:**

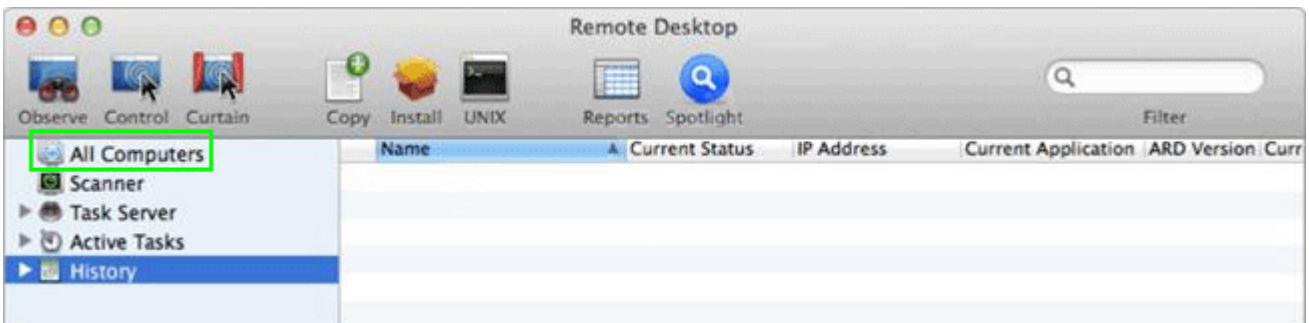
Reference:<http://krypted.com/mac-security/using-the-software-update-service-on-mountain-lionserver/>

### 5.HOTSPOT

In the screenshot below, click where you would need to click to see a list of the OS X computers that Apple Remote Desktop is configured to manage.



**Answer:**



**Explanation:**

[http://manuals.info.apple.com/MANUALS/0/MA339/en\\_US/ARD31\\_TO.pdf](http://manuals.info.apple.com/MANUALS/0/MA339/en_US/ARD31_TO.pdf)