

KTest

更に上のクオリティ 更に上のサービス



問題集

<http://www.ktest.jp>

1年で無料進級することに提供する

Exam : 650-296

Title : TelePresence Video Sales
Engineer for Advanced
Exam

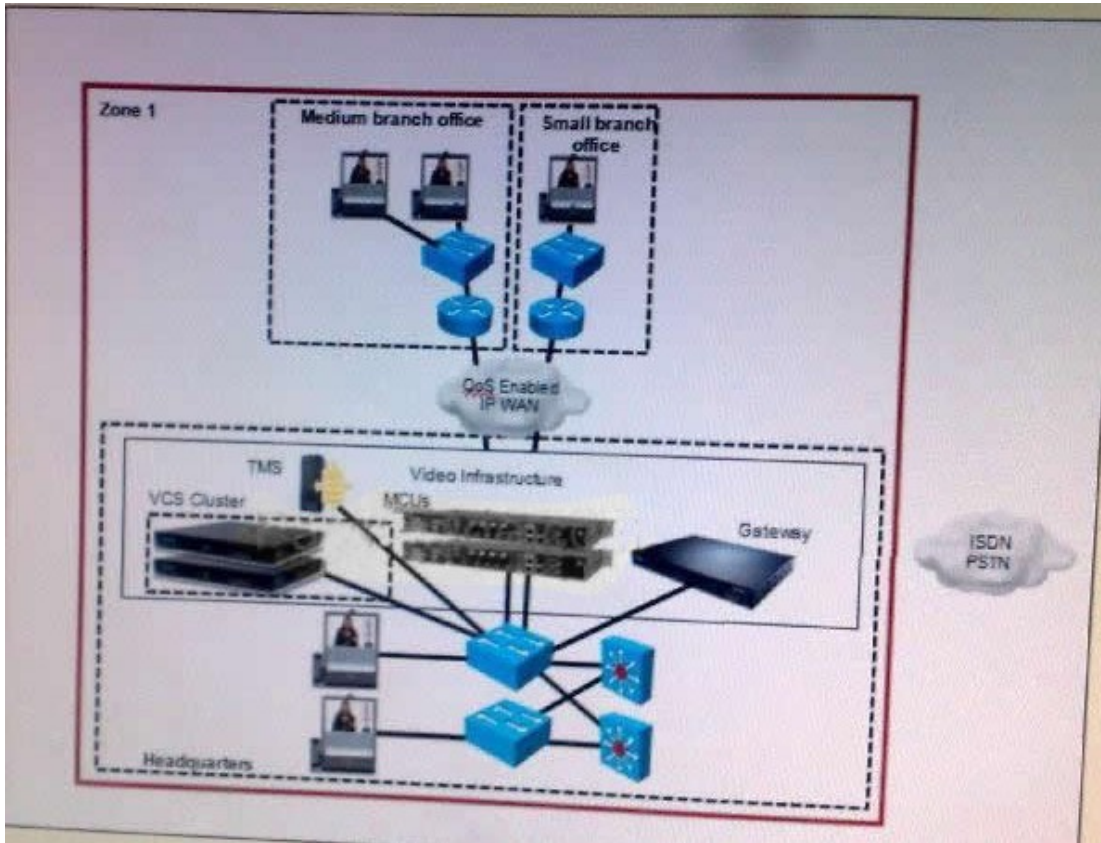
Version : Demo

1. Why would you include a gateway in your design?

- A. Gateways assist in video and conferencing integration
- B. Gateways allow for simplification of the address plan by eliminating the need for dialing a full PSTN number
- C. Gateways provide network translation if varying protocols are used
- D. Gateways are required to integrate multiple endpoints

Answer: C

2. Refer to the exhibit,



Which deployment model is represented.?

- A. campus multizone
- B. WAN multizone
- C. campus single zone
- D. WAN single zone

Answer: D

3. Which three methods can be used to start a conference with the Cisco TelePresence Video Communication Server? (Choose three)

- A. Use the web interface of the Cisco TelePresence Video Communication Server
- B. Use the Cisco TelePresence System user interface
- C. Call directly into a conference from an endpoint
- D. Use a FindMe connection
- E. Connect to a VCS Expressway from an IP endpoint

- F. Receive a request-for-conference call from a connected user
- G. Use the Cisco TelePresence remote control

Answer: BCG

4.Which of these is an advantage of the multizone model VCS with Prefix Dialing?

- A. Location requests are only sent to the relevant zone
- B. Location VCS servers only need to know about the directory VCS and do not need to know about any other local VCS
- C. When adding a new zone, only the directory gatekeeper needs to be configured
- D. All gatekeepers know about all calls at times

Answer: A

5.Your network uses a combination of SIP and H.323 endpoints. When planning to implement firewalls for security, what device permits traversal of the firewall for there devices?]

- A. Gateway
- B. VCS Expressway
- C. Tandberg Management Suite
- D. multipoint control unit
- E. Cisco TelePresence

Answer: B

6.Which two of these configurations must be applied when dialing from an IP endpoint to an ISDN destination? (Choose two)

- A. A dial plan rule must be created
- B. Gateway services numbers should mimic incoming PSIT routing methods
- C. The Cisco TelePresence Software Version TC4.0 protocol is required
- D. DID mapping must be configured on the ISDN gateway Build Your Dreams
- E. A prefix must be registered with the gatekeeper

Answer: AE

7.How does the VCS Expressway allow secure traversal of a firewall?

- A. It uses a designated port to allow all traffic to pass through the firewall
- B. It takes the place of a firewall to control trusted messages using a pre-set list of destinations
- C. It makes outbound connections only
- D. It prohibits all incoming and outgoing message from untrusted destinations

Answer: C

8.Which MSE blade provides high-definition multipoint control unit support?

- A. Cisco MSE 8510 Media2
- B. Cisco MSE 8420 Media
- C. Cisco MSE 8350 IP GW
- D. Cisco MSE 8220 VCR

Answer: A

9.Which of these is a disadvantage of a single-zone (VCS) WAN model?

- A. No endpoints will be able to place calls if connectivity is lost to the VCS location
- B. Not all signaling goes through the VCS in the headquarters, causing signaling traffic across the WAN link
- C. If interworking is required, the media does not go through the VCS in the headquarters, even if the video call is from a branch office endpoint to another endpoint in that office
- D. Flexibility cannot be assured in the headquarters configuration

Answer: A

10.Which two of these tasks should be completed to enable calls through a firewall? (Choose two)

- A. Create one traversal server zone on the VCS Expressway for any VCS Control that is running a traversal client
- B. Configure the traversal server zone with details of the corresponding zone on the traversal client
- C. Create a traversal server zone on your local VCS Control Build Your Dreams
- D. Configure VCS with details of the corresponding zone on the traversal server
- E. Create a traversal client zone on your local VCS Control

Answer: AE