

KTest

更に上のクオリティ 更に上のサービス



問題集

<http://www.ktest.jp>

1年で無料進級することに提供する

Exam : **156-915.1**

Title : **Accelerated CCSE 1.1 NGX**

Version : **DEMO**

1. When restoring NGX using the upgrade_import command, which of the following items are NOT restored?

- A. Security Policies
- B. Global properties
- C. Licenses
- D. User groups
- E. Route tables

Answer: E

2. Your organization has many VPN-1 Edge gateways at various branch offices, to allow VPN-1 SecureClient users to access company resources. For security reasons, your organization's Security Policy requires all Internet traffic initiated behind the VPN-1 Edge gateways first be inspected by your headquarters' VPN-1 Pro Security Gateway. How do you configure VPN routing in this star VPN Community?

- A. To the Internet and other targets only
- B. To the center and other satellites, through the center
- C. To the center only
- D. To the center, or through the center to other satellites, then to the Internet and other VPN targets

Answer: D

3. Your organization's security infrastructure separates Security Gateways geographically. You must request a central license for one remote Security Gateway. How would you request and apply the license?
Request a central license:

- A. using the remote Gateway's IP address. Apply the license locally with the cplic put command.
- B. for the Gateways' IP address. Apply the license on the SmartCenter Server with the cprlic put command.
- C. using the remote Gateway's IP address. Attach the license to the remote Gateway via SmartUpdate.
- D. using your SmartCenter Server's IP address. Attach the license to the remote Gateway via SmartUpdate.
- E. using the SmartCenter Server's IP address. Apply the license locally on the remote Gateway with the cplic put command.

Answer: D

4. Your VPN Community includes three Security Gateways. Each Gateway has its own internal network defined as a VPN Domain. You must test the VPN-1 NGX route-based VPN feature, without stopping the VPN. What is the correct order of steps?

- A. 1. Add a new interface on each Gateway. 2. Remove the newly added network from the current VPN Domain for each Gateway. 3. Create VTIs on each Gateway, to point to the other two peers 4. Enable advanced routing on all three Gateways.
- B. 1. Add a new interface on each Gateway. 2. Remove the newly added network from the current VPN Domain in each gateway object. 3. Create VPN Tunnel Interfaces (VTI) on each gateway object, to point to the other two peers. 4. Add static routes on three Gateways, to route the new network to each peer's VTI interface.
- C. 1. Add a new interface on each Gateway. 2. Add the newly added network into the existing VPN Domain for each Gateway. 3. Create VTIs on each gateway object, to point to the other two peers. 4. Enable advanced routing on all three Gateways.
- D. 1. Add a new interface on each Gateway. 2. Add the newly added network into the existing VPN

Domain for each gateway object. 3. Create VTIs on each gateway object, to point to the other two peers. 4. Add static routes on three Gateways, to route the new networks to each peer's VTI interface.

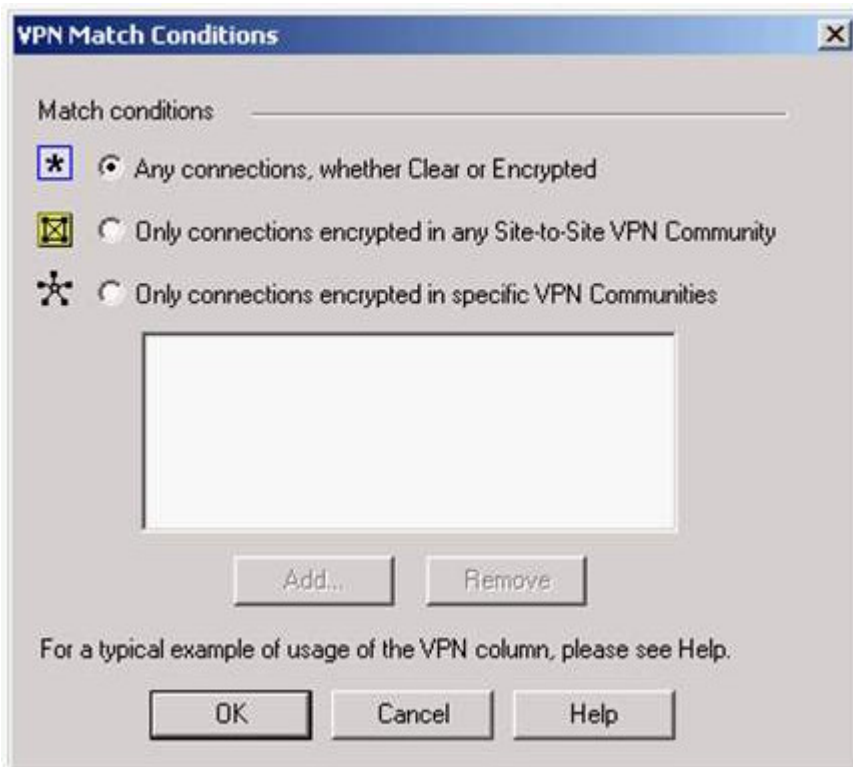
Answer:B

5.Eric wants to see all URLs' full destination paths in the SmartView Tracker logs, not just the fully qualified domain name of the Web servers. For example, the information filed of a log entry displays the URL http: //hp.msn.com/css/home/hpcl1012.css. How can Eric best customize SmartView Tracker to see the logs he wants? Configure the URI resource, and select:

- A."transparent" as the connection method
- B."tunneling" as the connection method
- C."optimize URL logging"; use the URI resource in the rule, with action "accept"
- D."Enforce URL capability"; use the URI resource in the rule, with action "accept"

Answer:C

6.Steve tries to configure Directional VPN Rule Match in the Rule Base. But the Match column does not have the option to see the Directional Match. Steve sees the following screen. What is the problem?



- A.Steve must enable directional_match(true) in the objectes_5_0.C file on SmartCenter Server.
- B.Steve must enable Advanced Routing on each Security Gateway.
- C.Steve must enable VPN Directional Match on the VPN Advanced screen, in Global properties.
- D.Steve must enable a dynamic-routing protocol, such as OSPF, on the Gateways.
- E.Steve must enable VPN Directional Match on the gateway object??s VPN tab.

Answer:C

7.In a Management High Availability (HA) configuration, you can configure synchronization to occur automatically, when: 1. The Security Policy is installed. 2. The Security Policy is saved. 3. The Security Administrator logs in to the secondary SmartCenter Server, and changes its status to active. 4. A scheduled event occurs. 5. The user database is installed. Select the BEST response for the synchronization sequence. Choose one.

- A.1,2,3
- B.1,2,3,4
- C.1,3,4
- D.1,2,5
- E.1,2,4

Answer:E

8.After importing the NGX schema into an LDAP server, what should you enable? Schema checking

- A.Encryption
- B.UserAuthority
- C.ConnectControl
- D.Secure Internal Communications

Answer:A

9.What is the command to see the licenses of the Security Gateway FWDALLAS from your SmartCenter Server?

- A.cprlic print FWDALLAS
- B.fw licprint FWDALLAS
- C.fw tab -t fwlic FWDALLAS
- D.cplic print FWDALLAS
- E.fw lic print FWDALLAS

Answer:A

10.How can you unlock an administrator's account, which was been locked due to SmartCenter Access settings in Global Properties?

- A.Type fwm lock_admin -ua from the command line of the SmartCenter Server.
- B.Clear the "locked" box of the user's General Properties in SmartDashboard.
- C.Type fwm unlock_admin -ua from the command line of the SmartCenter Server
- D.Type fwm unlock_admin -ua from the command line of the Security Gateway.
- E.Delete the file admin.lock in the \$FWDIR/tmp/directory of the SmartCenter Server.

Answer:A

11.You are reviewing SmartView Tracker entries, and see a Connection Rejection on a Check Point QoS rule. What causes the Connecion Rejection?

- A.No QoS rule exists to match the rejected traffic.
- B.The number of guaranteed connections is exceeded. The rule's action properties are not set to accept additional connections.
- C.The Constant Bit Rate for a Low Latency Class has been exceeded by greater than 10%, and the Maximal Delay is set below requirements.
- D.Burst traffic matching the Default Rule is exhausting the Check Point QoS global packet buffers.
- E.The guarantee of one of the rule??s sub-rules exceeds the guarantee in the rule itself.

Answer:B

12.You are preparing to configure your VoIP Domain Gatekeeper object. Which two other objects should you have created first?

- A.An object to represent the IP phone network, AND an object to represent the host on which the proxy is installed.
- B.An object to represent the PSTN phone network, AND an object to represent the IP phone network
- C.An object to represent the IP phone network, AND an object to represent the host on which the

gatekeeper is installed.

D.An object to represent the Q.931 service origination host. AND an object to represent the H.245 termination host.

E.An object to represent the call manager. AND an object to represent the host on which the transmission router is installed.

Answer:C

13.In SmartView Tracker, which rule shows when a packet is dropped due to anti-spoofing?

A.Rule 0

B.Cleanup Rule

C.Rule 1

D.Rule 999

E.Stealth Rule

Answer:A

14.Your NGX Enterprise SmartCenter Server is working normally. However, you must reinstall the SmartCenter Server, but keep the SmartCenter Server configuration (for example, all Security Policies, database, etc.) How would you reinstall the Server and keep its configuration?

A.1.Run the latest upgrade_export utility to export the configuration 2.Keep the exported file in the same location. 3.Use SmartUpdate to reinstall the SmartCenter Server. 4.Run upgrade_import to import the configuration.

B.1.Run the latest upgrade_export utility to export the configuration 2.Leave the exported. tgz file in \$ FWDIR. 3.Install the primary SmartCenter Server on top of the configuration 4.Run upgrade_import to import the configuration.

C.1. Insert the NGX CD-ROM, and select the option to export the configuration into a.tgz file 2. Transfer the .tgz file to another networked machine. 3. Uninstall all NGX packages, and reboot. 4. Use the NGX CD-ROM to select the upgrade_import option to import the configuration.

D.1. Download the latest upgrade_export utility, and run it from \$FWDIR\bin to export the configuration into a.tgz file. 2. Transfer the .tgz file to another network machine. 3. Uninstall all NGX packages and reboot. 4. Install a new primary SmartCenter Server. 5. Run upgrade_import to import the configuration

Answer:D

15.Jeremy manages sites in Tokyo, Calcutta and Dallas, from his office in Chicago. He is trying to create a report for management, detailing the current software level of each Security Gateway. He also wants to create a proposal outline, listing the most cost-effective way to upgrade his Gateways. Which two SmartConsole applications should Jeremy use, to create his report and outline?

A.SmartLSM and SmartUpdate

B.SmartDashboard and SmartLSM

C.SmartDashboard and SmartView Tracker

D.SmartView Monitor and SmartUpdate

E.SmartView Tracker and SmartView Monitor

Answer:D

16.How can you reset Secure Internal Communications (SIC) between a SmartCenter Server and Security Gateway?

A.From the SmartCenter Server's command line type fw putkey -p .

B.From the SmartCenter Server's command line type fw putkey -p .

C.Run the command fwm sic_reset to reinitialize the Internal Certificate Authority (ICA) of the

SmartCenter Server. Then retype the activation key on the Security Gateway from SmartDashboard.

D.From cpconfig on the SmartCenter Server, choose the Secure Internal Communication option and retype the activation key.Next, retype the same key in the gateway object in SmartDashboard and reinitialize Secure Internal Communications (SIC).

E.Use SmartUpdate to retype the activation key of the Security Gateway.

Answer:D

17.Select the correct statement about Secure Internal Communications (SIC) Certificates? SIC Certificates:

A.for NGX Security Gateways are created during the SmartCenter Server installation.

B.for the SmartCenter Server are created during the SmartCenter Server installation.

C.are used for securing internal network communications between the SmartView Tracker and an OPSEC device.

D.decrease network security by securing administrative communication among the SmartCenter Servers and the Security Gateway.

E.uniquely identify Check Point enable machines; they have the same function as Authentication Certificates.

Answer:B

18.Nelson is a consultant. He is at a customer's site reviewing configuration and logs as part of a security audit. Nelson sees logs accepting POP3 traffuc, but he does not see a rule allowing POP3 traffic in the Rule Base. Which of the following is the most likely cause? The POP3:

A.service is a VPN-1 Control Connection

B.rule is hidden

C.service is accepted in Global Properties

D.service cannot be controlled by NGX

E.rule is disabled

Answer:B

19.Which Check Point QoS feature allows a Security Administrator to define special classes of service for delay-sensitive applications?

A.Weighted Fair Queuing

B.Limits

C.Differentiated Services

D.Low Latency Queueing

E.Guarantees

Answer:D

20.When Load Sharing Multicast mode is defined in a ClusterXL cluster object, how are packets being handled by cluster members?

A.All cluster members process all packets, and members synchronize with each other.

B.All members receive all packets. The SmartCenter Server decides which member will process the packets. Other members simply drop the packets.

C.Only one member at a time is active. The active cluster member processes all packets.

D.All members receive all packets. An algorithm detemines which member processes packets, and which member drops packets.

Answer:D