

# ***KTest***

更に上のクオリティ 更に上のサービス



## **問題集**

<http://www.ktest.jp>

1年で無料進級することに提供する

**Exam** : **070-683**

**Title** : TS. Windows 7, Preinstalling  
for OEMs

**Version** : DEMO

1. You have a Windows 7 image. You mount the image, add additional files to the image, and then successfully unmount the image. You notice that the additional files are not in the image. You need to ensure that the additional files are saved in the image. What should you do?

- A.Run imagex.exe and specify the /mount parameter.
- B.Run imagex.exe and specify the /commit parameter.
- C.Run dism.exe and specify the /scratchdir parameter.
- D.Run dism.exe and specify the /cleanup-wim parameter.

**Answer: B**

2. You are preparing a Windows 7 image. You install several out-of-box drivers. You plan to generalize the image, and then deploy the image to computers that have the exact same hardware as the reference computer. You need to ensure that when the image is deployed, that hardware devices are not re-detected during the specialize configuration pass. What should you do before you generalize the computer?

- A.Set the DriverPaths value in the Oobe.xml file.
- B.Set the DriverPaths value in the Unattend.xml file.
- C.Set the PersistAllDeviceInstalls value in the Oobe.xml file.
- D.Set the PersistAllDeviceInstalls value in the Unattend.xml file.

**Answer: D**

3. You prepare a Windows 7 image. You need to ensure that the system clock is automatically set to the Central Time (UTC -6.00) time zone when the image is deployed. Your solution must prevent time zone customizations during Windows Welcome. What should you do?

- A.On the reference computer, modify the Time Zone. Generalize and capture the image.
- B.Generalize and capture the image. Create an Oobe.xml file that specifies the time zone.
- C.Generalize and capture the image. Create a Winpeshl.ini file that specifies the time zone.
- D.On the reference computer, run Dism.exe and specify the /set-timezone parameter. Generalize and capture the image.

**Answer: B**

4. You deploy a generalized image of Windows 7 to a computer. You start the computer in audit mode. You need to ensure that Windows Welcome runs when you restart the computer. What should you do?

- A.Start the computer, and then press F12.
- B.Start the computer, and then press CTRL+SHIFT+F3.
- C.Run Sysprep.exe and specify the /oobe parameter.
- D.Run Dism.exe and specify the /cleanup-image parameter.

**Answer: C**

5. You mount a Windows 7 image. You need to add a text file to the image. Which tool should you use?

- A.Dism.exe
- B.ImageX.exe
- C.Windows Explorer
- D.Windows System Image Manager

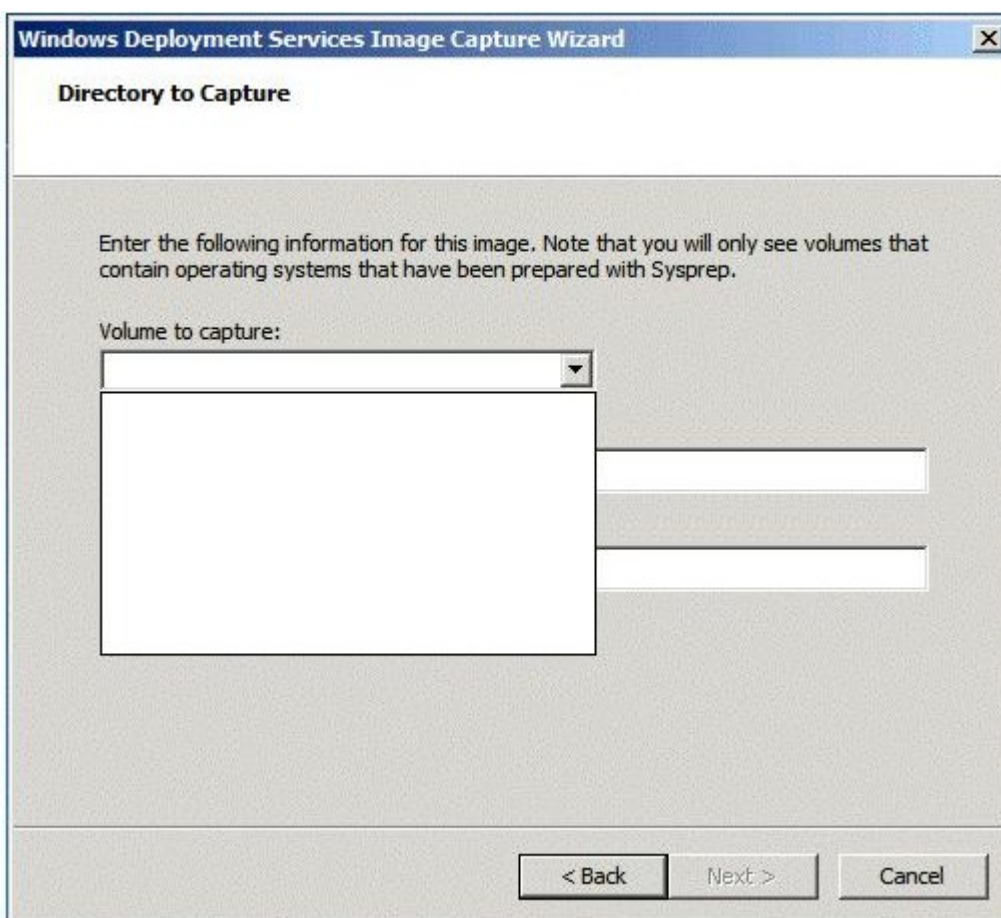
**Answer: C**

6. You deploy a generalized image on a computer. You need to start Windows 7 on the computer. Your solution must prevent Windows Welcome from completing. What should you do?

- A.Start the computer, and then press SHIFT+F10.
- B.Start the computer, and then press CTRL+SHIFT+F3.
- C.Start the computer from the Windows 7 installation media, and then select Repair computer.
- D.Start the computer from Windows PE, and then run Dism.exe and specify the /add-package parameter.

**Answer: B**

7. You attempt to capture an image to a Windows Deployment Services (WDS) server as shown in the exhibit. (Click the Exhibit button.) You need to capture the image to the WDS server. What should you do?



- A.Start the reference computer from Windows Preinstallation Environment (Windows PE), and then run sysprep.exe /audit. Restart the computer by using Pre-Boot eXecution Environment (PXE).
- B.Start the reference computer from Windows Preinstallation Environment (Windows PE), and then run sysprep.exe /generalize. Restart the computer by using Pre-Boot eXecution Environment (PXE).
- C.Start Windows 7 on the reference computer, and then run sysprep.exe /audit. Restart the computer by using Pre-Boot eXecution Environment (PXE).
- D.Start Windows 7 on the reference computer, and then run sysprep.exe /generalize. Restart the computer by using Pre-Boot eXecution Environment (PXE).

**Answer: D**

8. You have a computer that runs Windows 7. You start a capture of the computer to an image and get the following error message. The process cannot access the file because it is being used by another process. You need to create an image of the computer. What should you do before you capture the image?

- A. Disable the paging file.
- B. Stop the Windows Search service.
- C. Start the command prompt by using elevated privileges.
- D. Start the Computer by using Windows Preinstallation Environment (Windows PE).

**Answer: D**

9. You have a Windows Image (WIM) file named Image.wim that contains a Windows 7 image. The default compression settings were used when creating the WIM file. You create a new image. You need to ensure that both images are stored by using maximum compression. What should you do?

- A. Append the new image to Image.wim.
- B. Export the existing image, and then append the new image to Image.wim.
- C. Run Compact.exe and specify the /c parameter. Run Dism.exe and specify the /remount-WIM parameter.
- D. Run Imagex.exe and specify the /mountrw parameter. Run Dism.exe and specify the /cleanup-WIM parameter.

**Answer: B**

10. You have Windows Image (WIM) file that contains an image of Windows 7. You plan to deploy the image to computers that have a third-party hardware component. The device driver for the hardware component can only be installed by using an executable provided by the hardware vendor. You need to ensure that the device driver is installed when you deploy the image. What should you do first?

- A. On a reference computer, run Drvload.exe.
- B. On a reference computer, run Imagex.exe and specify the /apply parameter.
- C. On a technicians computer, run Imagex.exe and specify the /mount parameter.
- D. On a technicians computer, run Dism.exe and specify the /add-driver parameter.

**Answer: B**