

# ***KTest***

更に上のクオリティ 更に上のサービス



## **問題集**

<http://www.ktest.jp>

1年で無料進級することに提供する

**Exam** : **050-691**

**Title** : advanced novell network  
amnagement:netware 6.5

**Version** : DEMO

**1.Which RAID levels can be implemented with NSS? (Choose 2.)**

- A.0
- B.1
- C.2
- D.3
- E.4
- F.5
- G.6
- H.7

**Correct:A B**

**2.Which method allows you to increase the amount of storage space on a server without adding more storage devices?**

- A.Overbook the storage pool.
- B.Increase the size of the storage pool.
- C.Decrease the size of the storage pool.
- D.Recreate the partitions that a storage pool contains.

**Correct:A**

**3.Your NetWare 6.5 server has been assigned the DNS name of da1.da.com. Which URL would you use in a browser window to access the iMonitor service on this server?**

- A.http://da1.da.com:8009/nds-summary
- B.http://da1.da.com:8009/edir-summary
- C.https://da1.da.com:8009/nds-summary
- D.https://da1.da.com:8008/nds-summary
- E.https://da1.da.com:8009/edir-summary
- F.https://da1.da.com:8008/edir-summary

**Correct:C**

**4.You want to split your DATA volume at the DATA:\USERS subdirectory level to the VOL1 volume on DA1. DA1 is located in the .Contractors.DA container in the DA-TREE tree. Which command, when issued from the server console, will do this?**

- A.VLMN SPLIT DATA:\USERS VOL1
- B.VOLMN SPLIT DATA:\USERS VOL1
- C.VLMN SPLIT DATA:\USERS VOL1 DA1.Contractors.DA.DA-TREE
- D.VLMN SPLIT DATA:\USERS VOL1 .DA1.Contractors.DA.DA-TREE.
- E.VOLMN SPLIT DATA:\USERS VOL1 .DA1.Contractors.DA.DA-TREE
- F.VOLMN SPLIT DATA:\USERS VOL1 .DA1.Contractors.DA.DA-TREE.

**Correct:F**

**5.When a DFS junction is created, the VLDB assigns the junction a unique ID. Where is this unique ID stored? (Choose 2.)**

- A.In the VLDB
- B.In ConsoleOne
- C.In the volume's ACL
- D.In the NetWare Registry
- E.In the server's eDirectory object
- F.In the volume's eDirectory object

G.In the Registry of the client workstations

**Correct:A F**

6.While installing the Branch Office Appliance software, you are prompted to save the configuration to a diskette that can be used later during the installation of other Appliances. If you choose to do so, what filename is the configuration saved under?

- A.AUTOEXEC.NCF
- B.AUTOLOAD.CNF
- C.AUTOLOAD.NBO
- D.NBOCONFIG.NCF
- E.NBOCONFIG.TXT
- F.AUTOCONFIG.NCF

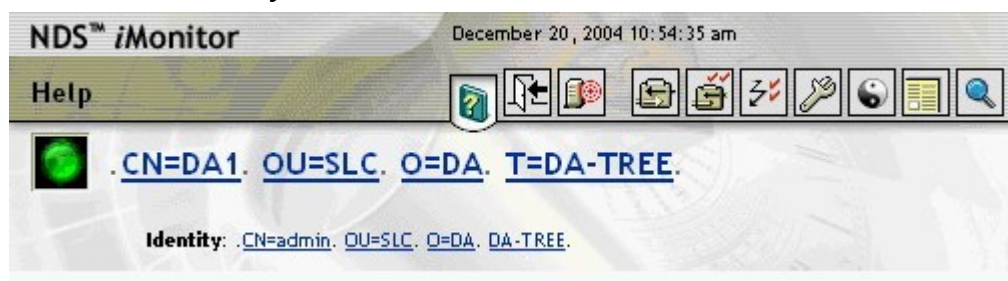
**Correct:C**

7.While migrating a NetWare 5.1 server to NetWare 6.5 using a Windows 2000 Professional workstation with Novell Client 4.83 installed, the migration fails. Given that the destination server has Universal Password deployed, what is the cause of the problem?

- A.Universal Password requires Novell Client 4.9 or later.
- B.Windows 2000 isn't compatible with Universal Password.
- C.The Migration Wizard isn't compatible with Windows 2000 Professional.
- D.NMAS must be disabled on the Novell Client 4.83 to be compatible with Universal Password.
- E.Novell Client 4.83 requires NCI 2.0.2 or later installed to be compatible with Universal Password.

**Correct:A**

8.Click the Point-and-Click button to begin. Click on the option that will allow you to check the version of eDirectory on a server.



**Correct:**

9.You need to restore an NSS logical volume that was deleted, but has not yet been purged. Click the area of the graphic that allows you to accomplish this task.

Server: DA1.SLC.DA

Pools:	Details:																												
New... Delete Rename... Activate Deactivate Increase size... Snapshot... Update eDirectory Deleted Volumes... Offline	<table border="0"> <tr> <td>Name:</td> <td>DATA_POOL</td> </tr> <tr> <td>Segments:</td> <td>0x9</td> </tr> <tr> <td>Number of Segments:</td> <td>1</td> </tr> <tr> <td>State:</td> <td>Active</td> </tr> <tr> <td>LSS Type:</td> <td>ZLSS</td> </tr> <tr> <td>Share State:</td> <td>Not Sharable for Clustering</td> </tr> <tr> <td>Volumes:</td> <td>DATA</td> </tr> <tr> <td>Number of Volumes:</td> <td>1</td> </tr> <tr> <td>Devices:</td> <td>0x5</td> </tr> <tr> <td>Number of Devices:</td> <td>1</td> </tr> <tr> <td>Total Space:</td> <td>15.31 GB</td> </tr> <tr> <td>Free Space:</td> <td>14.93 GB</td> </tr> <tr> <td>Used Space:</td> <td>391.70 MB</td> </tr> <tr> <td>Dismountable Space:</td> <td>116.00 KB</td> </tr> </table>	Name:	DATA_POOL	Segments:	0x9	Number of Segments:	1	State:	Active	LSS Type:	ZLSS	Share State:	Not Sharable for Clustering	Volumes:	DATA	Number of Volumes:	1	Devices:	0x5	Number of Devices:	1	Total Space:	15.31 GB	Free Space:	14.93 GB	Used Space:	391.70 MB	Dismountable Space:	116.00 KB
Name:	DATA_POOL																												
Segments:	0x9																												
Number of Segments:	1																												
State:	Active																												
LSS Type:	ZLSS																												
Share State:	Not Sharable for Clustering																												
Volumes:	DATA																												
Number of Volumes:	1																												
Devices:	0x5																												
Number of Devices:	1																												
Total Space:	15.31 GB																												
Free Space:	14.93 GB																												
Used Space:	391.70 MB																												
Dismountable Space:	116.00 KB																												

**Correct:**

**10. Assuming the CD drive in your workstation is assigned drive letter D, where is the installation file for the Server Consolidation Utility located?**

- A. D:\NWSC.EXE
- B. D:\SERVCONS.EXE
- C. D:\TOOLS\NWSC.EXE
- D. D:\TOOLS\SERVCONS.EXE
- E. D:\PRODUCTS\SERVCONS\NWSC.EXE
- F. D:\PRODUCTS\SERVCONS\SERVCONS.EXE

**Correct: E**

**11. You're re-installing the Appliance software on your server. What will happen to your existing user data?**

- A. All existing data will be lost when the appliance re-images the drive.
- B. The installation program will ask if you want to delete or preserve the existing data.
- C. The installation program will prompt you that the Appliance software already exists and will exit.
- D. The installation program will save the existing data in the Sys:\System.bak file on the Appliance.
- E. The existing data will be detected and copied to a new partition where it can be accessed when the installation is complete.

**Correct: B**

**12. The DirXML driver is comprised of 2 components. What are they? (Choose 2.)**

- A. Join Engine
- B. XML Interface
- C. Publisher Filter
- D. Subscriber Filter

E.eDirectory Interface

F.Application Native Interface

**Correct:B F**

**13.Which preconfigured report searches the entire tree, communicates with every NetWare server it finds, and reports errors?**

A.Agent Health

B.Obituary Listing

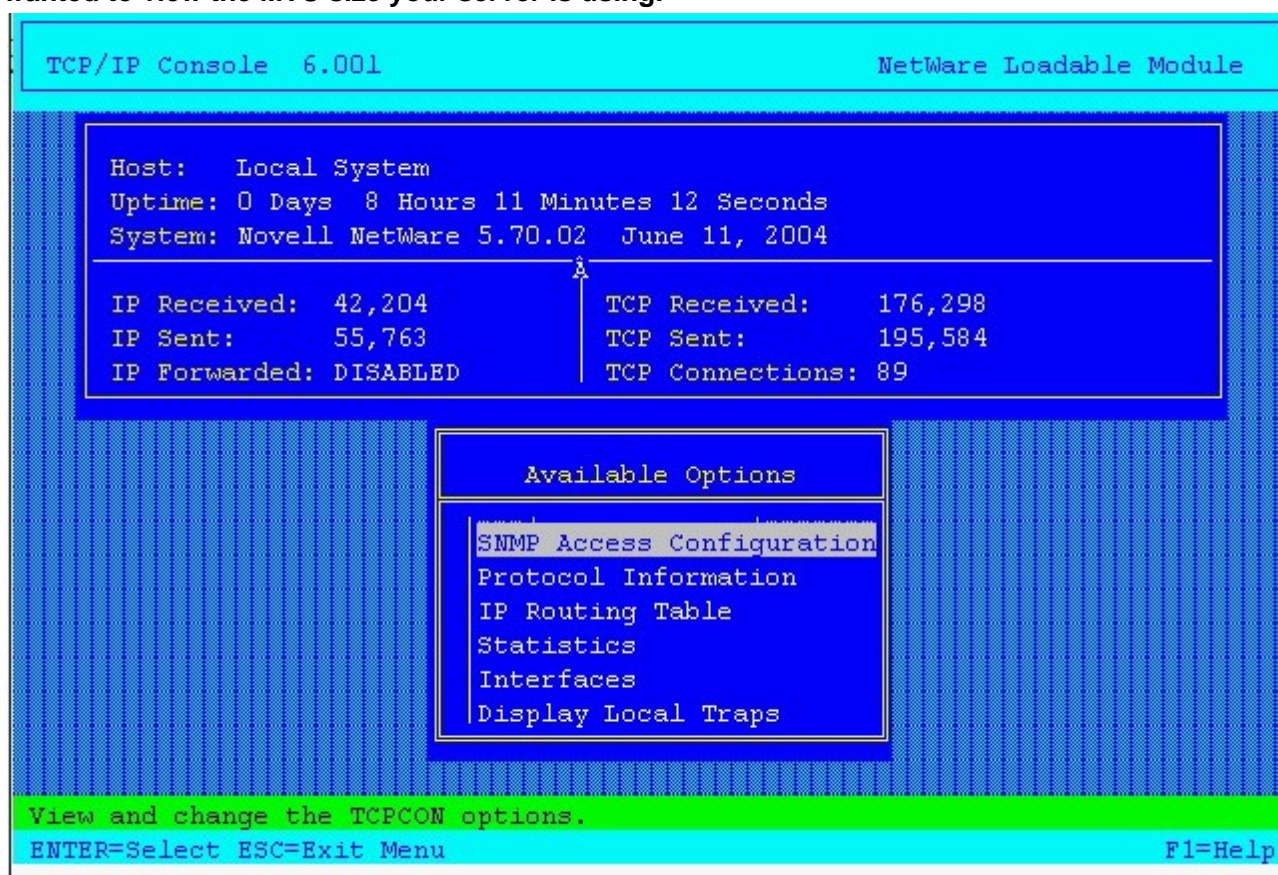
C.Object Statistics

D.Server Information

E.Service Advertising

**Correct:D**

**14.Click the Point and Click button to begin. Click the TCPCON option you would select if you wanted to view the MTU size your server is using.**



**Correct:**

**15.You have an NSS pool named APPS\_POOL. You have taken 4 snapshots of it. What is the default name assigned by NSS to the 4th snapshot of the pool?**

A.APPS\_POOL4

B.APPS\_POOL-4

C.APPS\_POOL\_4

D.APPS\_POOL\_S4

E.APPS\_POOL\_S\_4

F.APPS\_POOL\_4\_S

**Correct:D**

**16.You're troubleshooting a routing problem in your organization's network. To test a hypothesis, you need to run the TRACERT command from one of your Windows XP workstations to trace the route to corp.da.com with the maximum number of router hops constrained to 4. Which command should you use to do this?**

- A.TRACERT -4 corp.da.com
- B.TRACERT corp.da.com -4
- C.TRACERT -H 4 corp.da.com
- D.TRACERT -R 4 corp.da.com
- E.TRACERT -A 4 corp.da.com
- F.TRACERT corp.da.com -D 4

**Correct:C**

**17.Which command would you issue from the console of a NetWare 6.5 server to test its DNS resolver configuration?**

- A.CONFIG
- B.TCPCON
- C.IPCONFIG
- D.IFCONFIG
- E.NSLOOKUP
- F.DNSCONFIG
- G.BINDCONFIG

**Correct:E**

**18.Your organization has implemented ZENworks for Servers Tiered Electronic Distribution with Nterprise Branch Office. To support this configuration, which IP port must be kept open on your organization's firewall?**

- A.20
- B.21
- C.631
- D.873
- E.1299
- F.2222

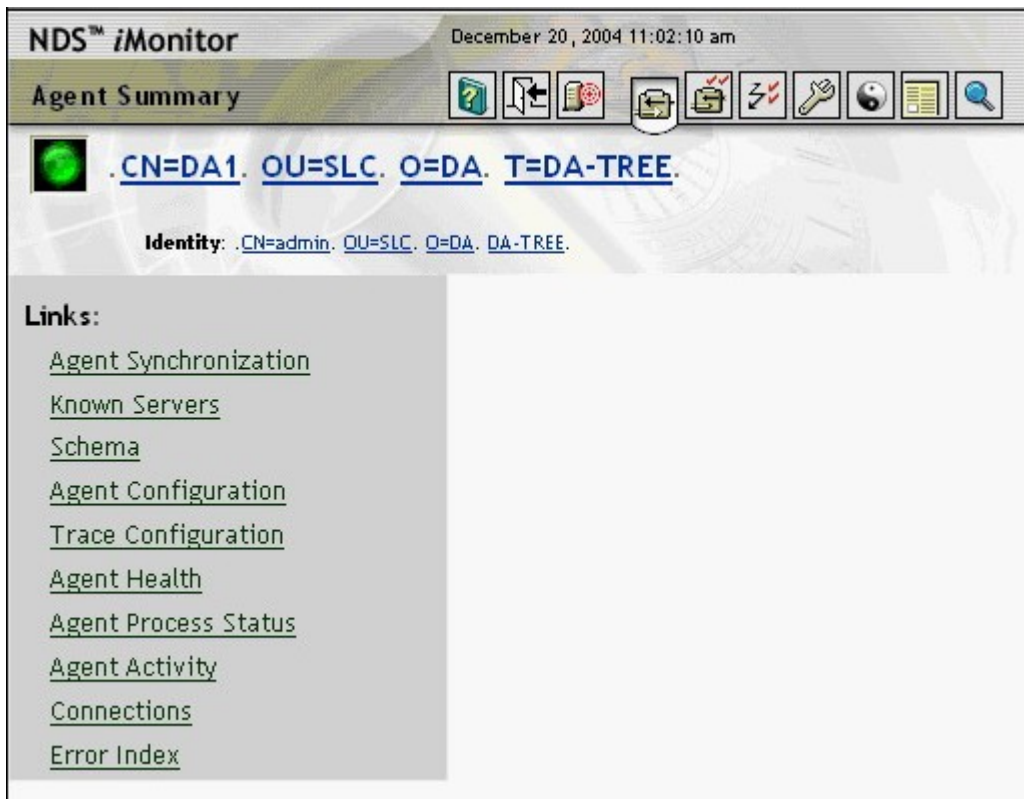
**Correct:E**

**19.You've configured a Branch Office system to use automatic user provisioning. When users attempt to log into the Appliance for the first time, authentication fails. The Appliance is running on a server with 512 MB of RAM, a Pentium III 1.13 GHz CPU, and a 40 GB hard disk drive. The users are using Windows 2000 Professional with Novell Client 4.9 installed. What is causing the problem?**

- A.The Appliance requires at least 1 GB of RAM.
- B.The Appliance requires a Pentium IV or later CPU.
- C.Novell Client 4.9 isn't compatible with Universal Password.
- D.The workstations must be upgraded to Windows XP Professional.
- E.NIC1 must be disabled on the Novell Client 4.9 before the first login.
- F.Windows 2000 Service Pack 4 must be applied to each workstation.
- G.NMAS must be disabled on the Novell Client 4.9 before the first login.
- H.Novell Client 4.9 Support Pack 1 must be applied to each workstation.

**Correct:G**

20. Click the Point-and-Click button to begin. Click the option that allows you to view partition synchronization information.



The screenshot shows the NDS iMonitor Agent Summary interface. At the top, the title is "NDS™ iMonitor" and the date/time is "December 20, 2004 11:02:10 am". Below the title is the "Agent Summary" section, which includes a toolbar with various icons. The main content area displays the identity ".CN=DA1. OU=SLC. O=DA. T=DA-TREE." and the identity ".CN=admin. OU=SLC. O=DA. DA-TREE." Below this is a "Links:" section with a list of navigation options: [Agent Synchronization](#), [Known Servers](#), [Schema](#), [Agent Configuration](#), [Trace Configuration](#), [Agent Health](#), [Agent Process Status](#), [Agent Activity](#), [Connections](#), and [Error Index](#).

**Correct:**